

Financial Dashboard.

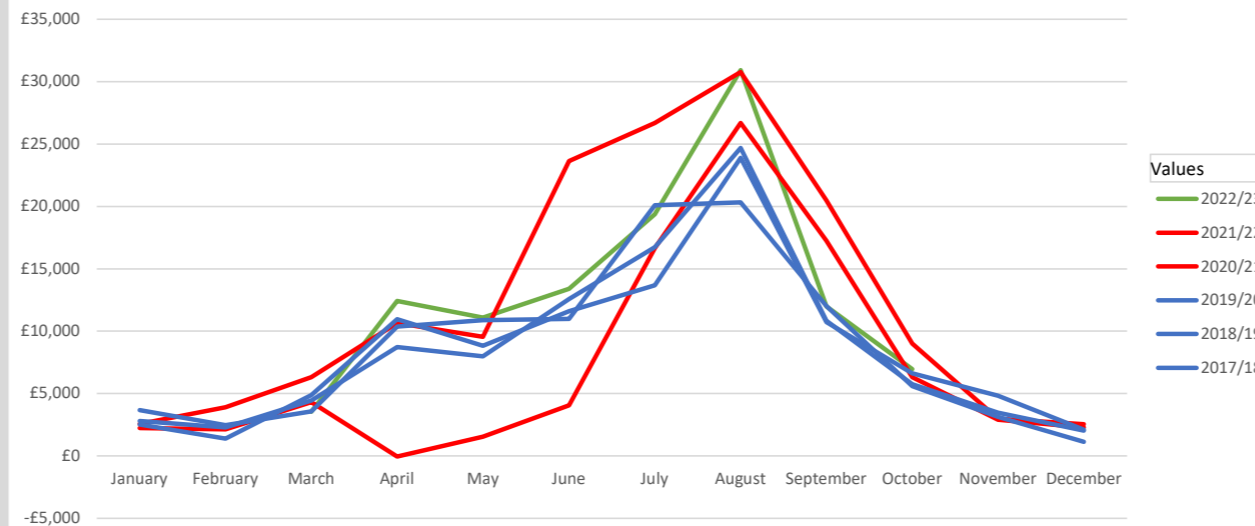
Position at the end of October 2022
(Month 7, 58% of the year)

Income v budget



We have received 100% of our expected budget total.

Parking Income (previous years) (Covid years in red)

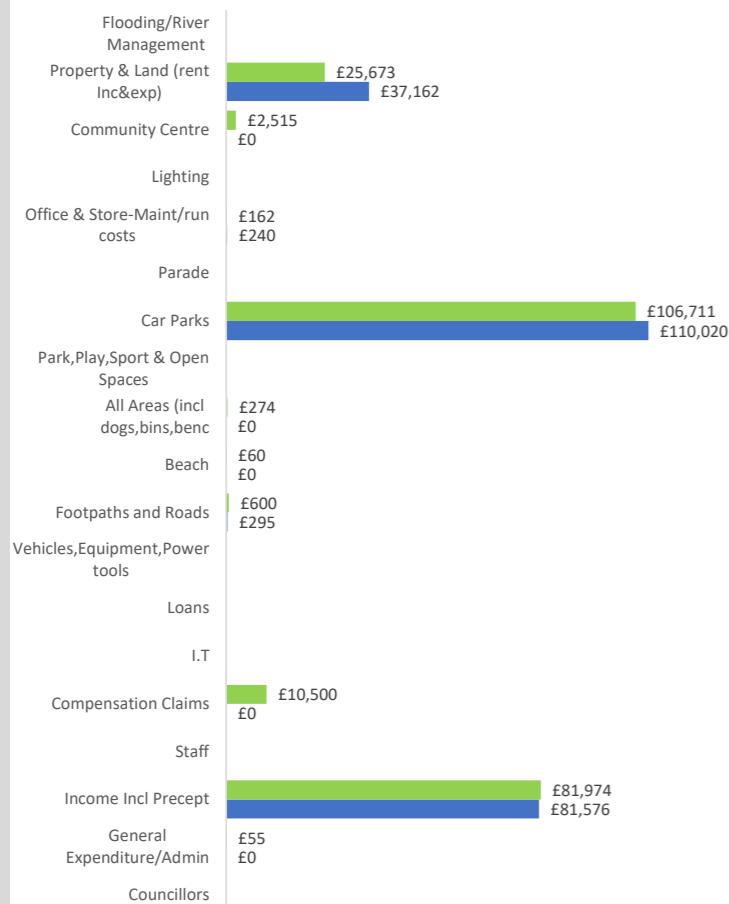


Expenditure v budget

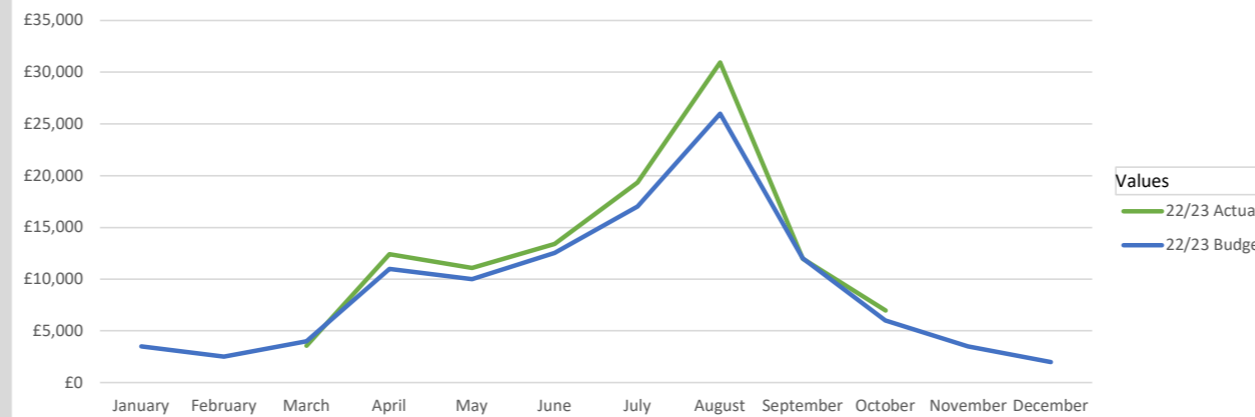


We have spent 57% of our expenditure budget.

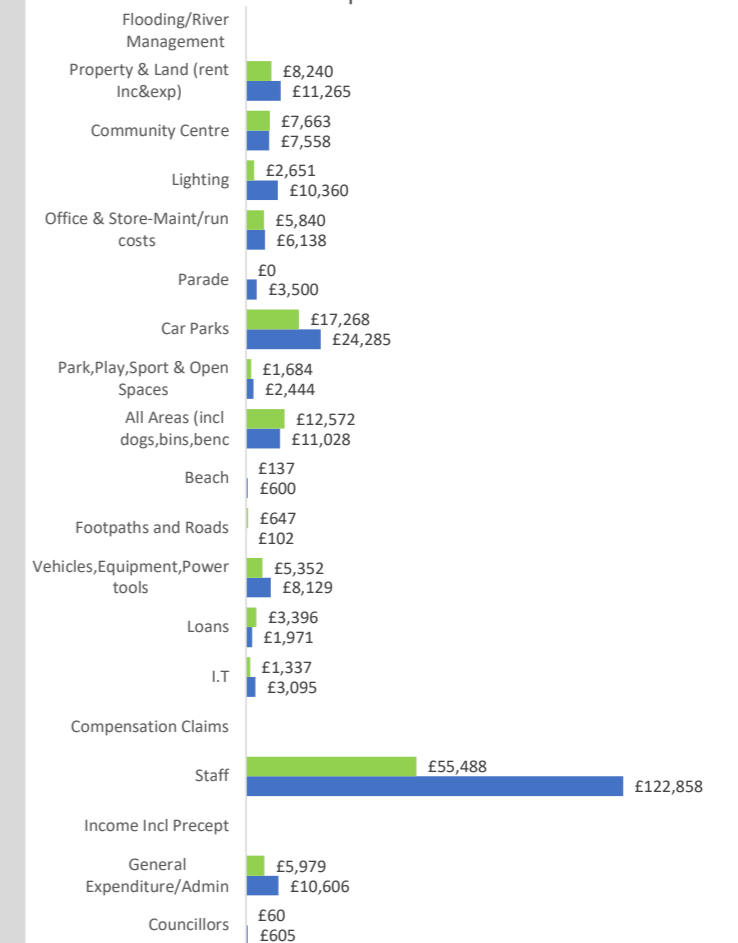
Income



Parking Income (current year v budget)



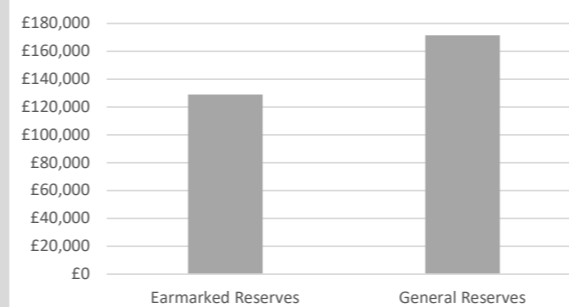
Expenditure



Bank Account Reconciliations.

All 5 monthly bank account reconciliations and the Petty Cash reconciliation all balanced, with £0 variance.

Cash Reserves



Our general reserves are the equivalent of 9.28 months of planned expenditure.

Councils are required to hold between 3 and 12 months worth of general reserves.