

# Financial Dashboard.

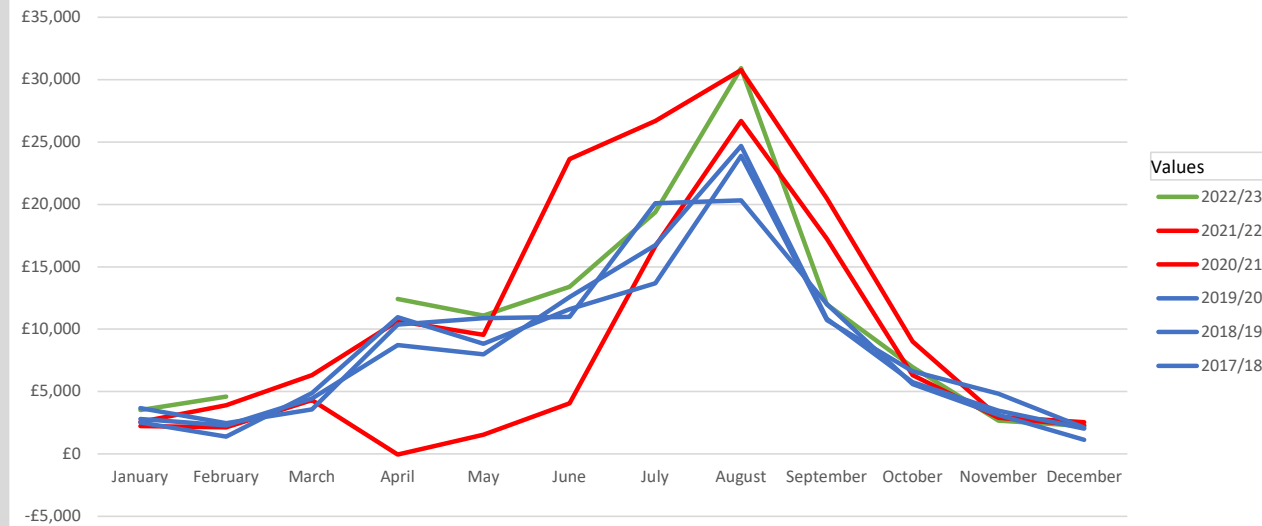
Position at the end of February 2023  
(Month 11, 92% of the year)

Income v budget



We have received 108% of our expected budget total.

Parking Income (previous years) (Covid years in red)

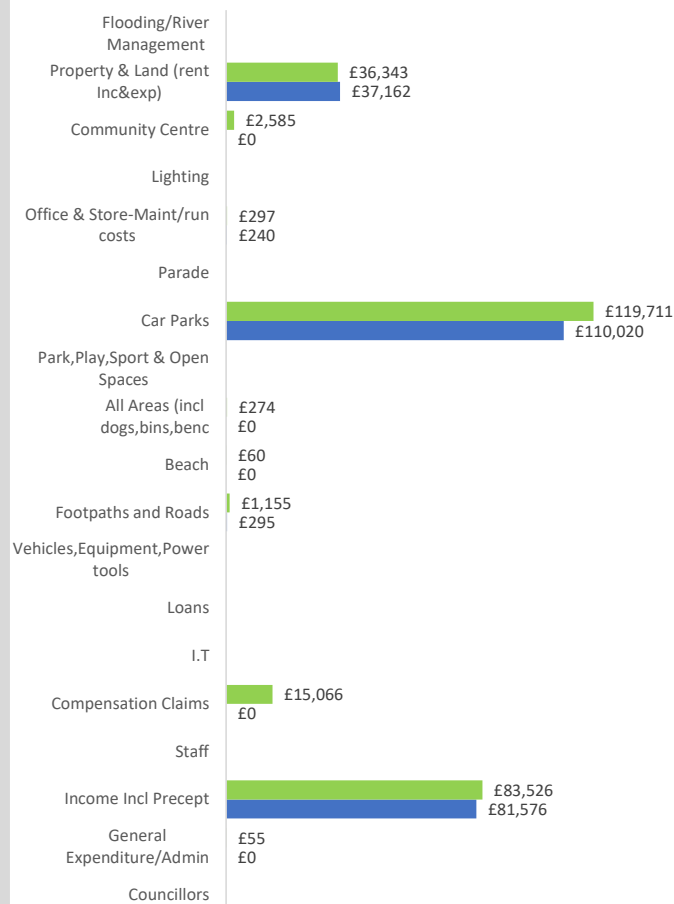


Expenditure v budget

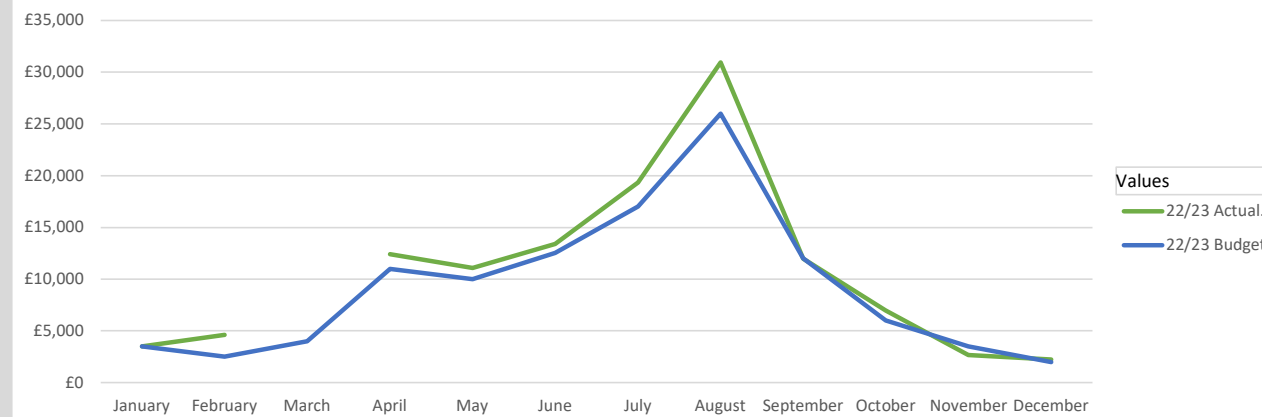


We have spent 93% of our expenditure budget.

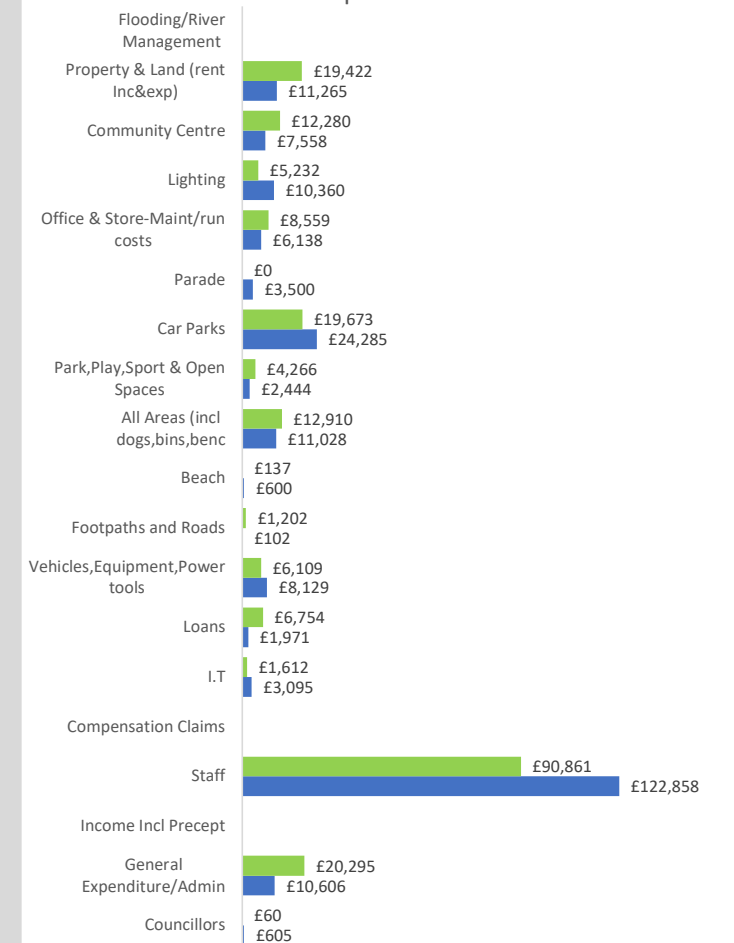
Income



Parking Income (current year v budget)



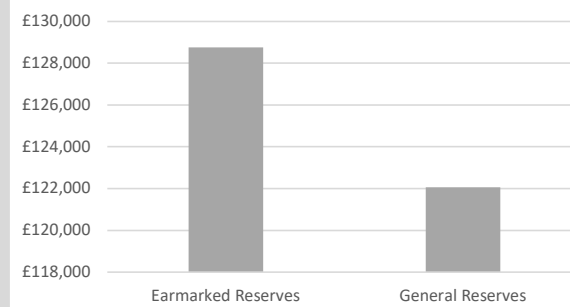
Expenditure



**Bank Account Reconciliations.**

All 5 monthly bank account reconciliations and the Petty Cash reconciliation all balanced, with £0 variance.

**Cash Reserves**



Our general reserves are the equivalent of 6.61 months of planned expenditure.

Councils are required to hold between 3 and 12 months worth of general reserves.